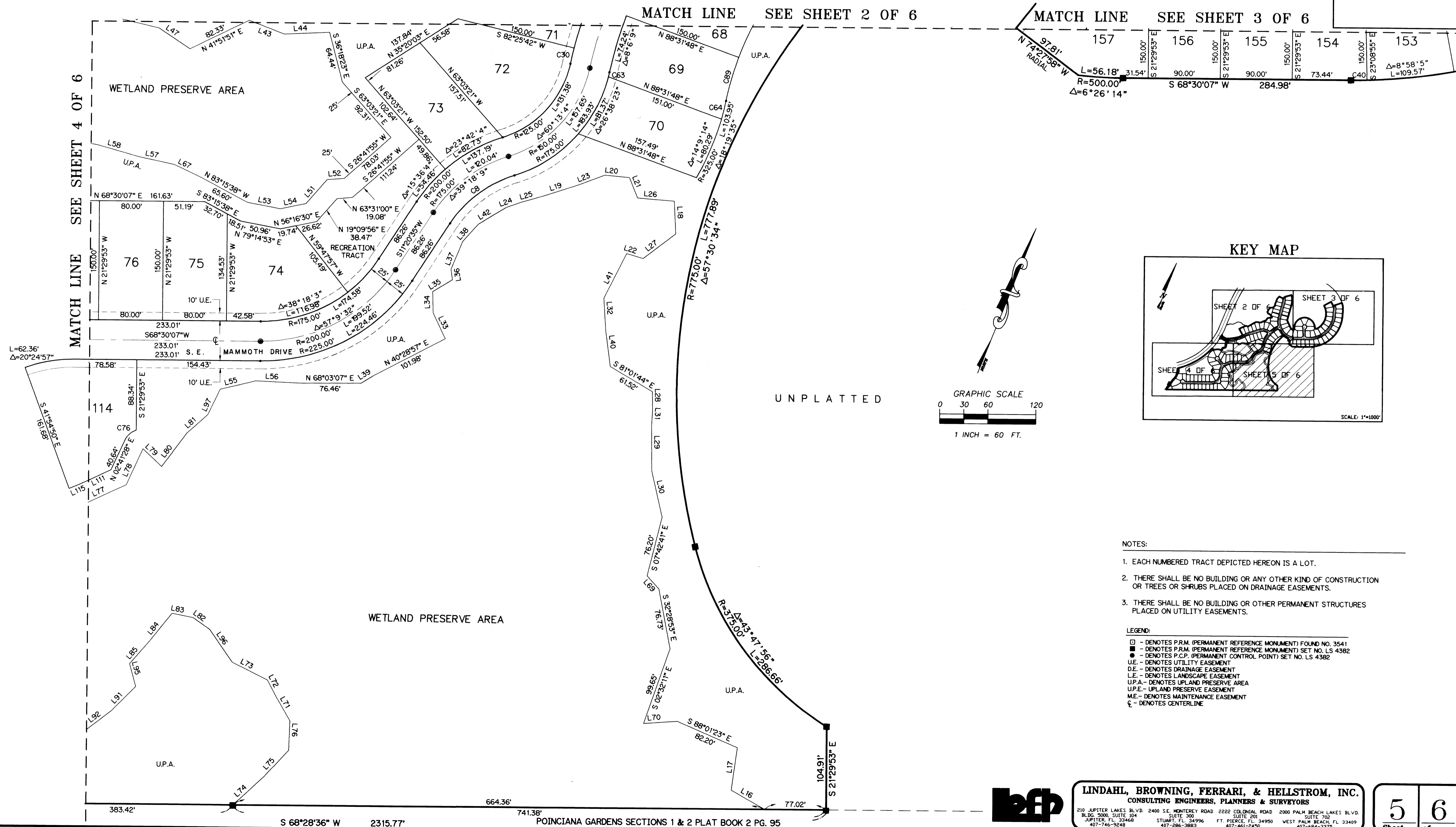


A PLAT OF FOREST GLADE PLAT NO. 2

BEING A PARCEL LYING WITHIN THE GOMEZ GRANT AND JUPITER ISLAND
AS RECORDED IN PLAT BOOK 1, PAGE 80
PUBLIC RECORDS OF PALM BEACH (NOW MARTIN) COUNTY, FLORIDA
AND RECORDED IN PLAT BOOK A, PAGE 17
PUBLIC RECORDS OF DADE (NOW MARTIN) COUNTY, FLORIDA



lfp **LINDAHL, BROWNING, FERRARI, & HELLSTROM, INC.**
CONSULTING ENGINEERS, PLANNERS & SURVEYORS

210 JUPITER LAKES BLVD. 2400 S.E. MONTEREY ROAD 2222 COLONIAL ROAD 2000 PALM BEACH LAKES BLVD.
BLDG. 3000, SUITE 104 SUITE 300 SUITE 201 SUITE 702
JUPITER, FL 33468 STUART, FL 34996 FT. PIERCE, FL 34950 WEST PALM BEACH, FL 33409
407-746-9248 407-286-3883 407-461-2450 407-684-3375